



EU Policies and the Relevance of TOPPS Best Practices

Stuart Rutherford – ECPA
stuart.rutherford@ecpa.eu
TOPPS farm visit
Hof ten Bosch, Huldenberg, Belgium 22/9/2017

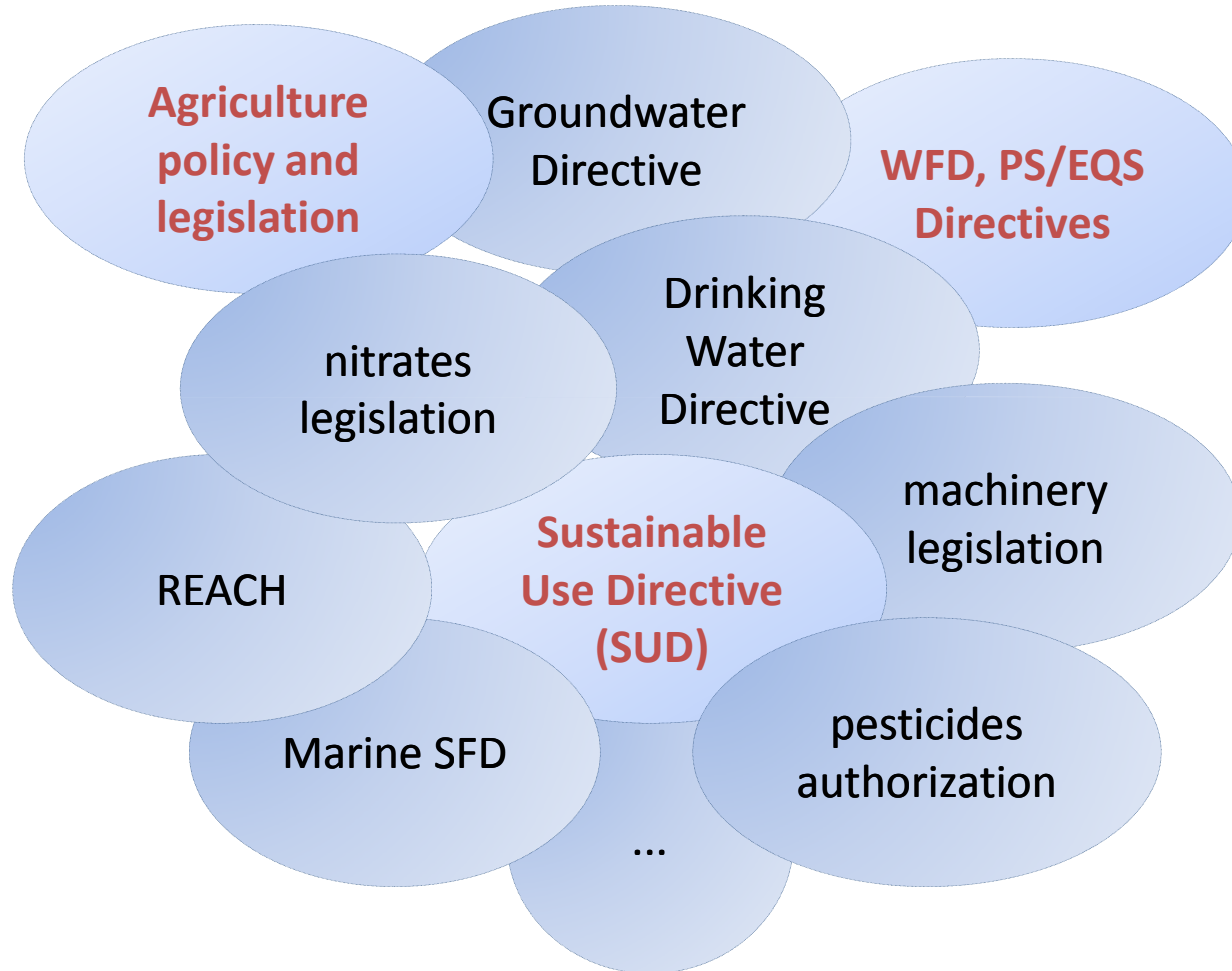


Train Operators to Promote best Practices & Sustainability

Contents

- **Relevant regulatory instruments**
- **Ideas on how TOPPS best practices fit with EU policy objectives**
- **Focus on some key elements of the EU framework:**
 - Water Framework Directive
 - Sustainable Use of pesticides Directive
 - Agriculture-Water policy interface
- **Considerations and questions for the future**
 - How to align linked policy instruments?
 - How to integrate practical measures into policy?

Many relevant regulatory instruments



A large, light blue question mark is centered on the slide, serving as a background for the main text. It has a soft shadow effect.

**So how do TOPPS Best Practices fit
with and help achieve EU policy
objectives or goals?**

What challenges do TOPPS Best Practices address?

BMPs help keep pesticides out of water by avoiding or minimising:

- **Point Sources**

e.g. cleaning or spills, accidental overspray etc.

- **Diffuse sources**

e.g. run-off, spray drift

→ BMPs represent practical means of reducing pesticide losses to water from all main agricultural sources

→ EU policies focus on WHAT to do... TOPPS BMPs act as *enablers* on HOW to implement

PPP losses to water can be significantly reduced

- **point sources can be avoided**
(operator is in control, no external factors interfere e.g. weather)
- **Runoff can be reduced**
(implementation of optimised landscape management)
- **Spray drift can be largely reduced**
(optimized sprayers, application planning)



Relevant EU legislation is wide-ranging and varied

Legislation may be:

- Target oriented e.g. EQSs in WFD
- Measure oriented e.g. NAPs required by SUD
- A mixture of both e.g. WFD requires RBMPs and PoMs, in addition to establishing EQSs

Policy areas often overlap e.g. water and agriculture

→ Let's take a closer look...

Water Legislation (1)

Water Framework Directive 2000/60/EC:

Environmental objectives	Art 4 – no deterioration, good status...
Drinking water provisions	Art 7 – reducing purification required...
Water monitoring and reporting	Art 8
Programs of Measures and River Basin Management Plans	Art 11 - PoM Art 8 - RBMP
Priority Substances and EQSs	Art 16

- *Mostly target oriented, few pointers on measures*
- Measures = Practical steps which are taken “on the ground”

Water Legislation (2)

WFD Managerial Programme to achieve objectives:

1. Define RBDs and catalogue characteristics
2. Identify environmental pressures and impacts
3. Establish River basin Management Plans (RBMPs) consisting of:
 - Basic measures (Art 11.3 - implementing pollution controls for point/diffuse sources, drinking water measures etc.)
 - Supplementary measures, as may be necessary
4. Monitoring programmes made operational

→ Associated guidance is important !

Sustainable Use of Pesticides(1)

Sustainable Use Directive 2009/128/EC

Fits into broader framework, complements e.g. Pesticide Authorisation Reg 1107/2009 & WFD

National Action Plans prepared and revised by MSs every 5 years => *subsidiarity based and mostly measures oriented*

Two overarching goals

Reducing impacts of pesticide use on humans and environment

Promoting the use of low pesticides input pest management

Sustainable Use of Pesticides (2)

Main *actions* required by SUD:

- **Training** for professional users, distributors, advisors => **certification** systems
- **Sales** – products only sold and bought by **trained professionals**
- **Equipment inspection** for all PAE according to ISO std (support from BTSF* programme) => *link to machinery legislation*
- **Protection of aquatic environment** and drinking water – no PHS, low drift, buffer strips, risk reduction in WFD protected areas
- **Integrated Pest Management** – Annex III info tools, advisory services, incentives... tillage, cover crops, crop rotation...
- **Handling, storage and disposal** measures

Agriculture-Water Policy Interface, CAP and RDPs (1)

Signs of an emerging EU common agenda on
agriculture and sustainable water management:



- Informal Com Joint TF on Water and Agriculture
- Joint discussions between MS Water Directors and agriculture counterparts
- Oct 2016 Water & Agriculture workshop in Bratislava
- COM SWD (2017) 153 on Agriculture and Sustainable Water Management discussed in May 2017

Next steps remain open...

Agriculture-Water Policy interface, CAP and RDPs (2)

Staff Working Doc key considerations:

- **Pressures:** nutrients, pesticides, abstraction
- **Obstacles:** structural, governance, economic, behavioural
- **Possible improvements:** full implementation, co-ordination, funding of measures, using existing knowledge & tools
- **Role of CAP 2nd pillar & MS RD programmes:** Voluntary measures – RDP support?
- **WFD basic requirements** under Pillar I cross compliance?

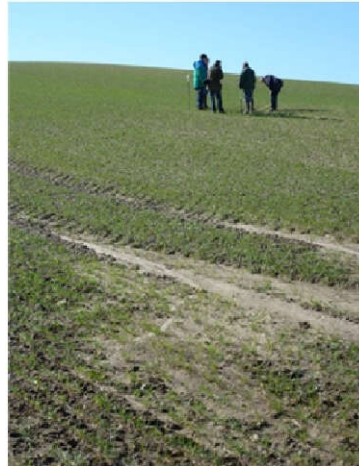
What next?

The path forwards has many open questions and issues:

- Long-standing challenge to better link policy objectives with measures
- How can stakeholders and regulators contribute to better aligning policy instruments like the WFD RBMPs and PoMs; SUD NAPs; CAP and RDPs?
- How to incentivise best practice uptake?
- TOPPS partners believe TOPPS BMPs can offer an important piece of the puzzle: *practical measures*



These questions are relevant for the policy aspects of the questions to be discussed after lunch...



THANK YOU FOR YOUR ATTENTION!

Some background information and links

- WFD & implementation timetable: http://ec.europa.eu/environment/water/water-framework/index_en.html
- CIRCABC for info on WFD Common Implementation Strategy: <https://circabc.europa.eu/w/browse/9ab5926d-bed4-4322-9aa7-9964bbe8312d>
- SUD: http://ec.europa.eu/food/plant/pesticides/sustainable_use_pesticides/index_en.htm
- COM Staff Working Document (2017) 153: <https://circabc.europa.eu/w/browse/7f7e84f6-8669-4999-8a1a-e4ff73cee381>
- EU Commission Drinking Water protection seminar: <https://circabc.europa.eu/w/browse/76c7b36d-e9d1-4b5a-b87b-e1d7050feac9>
- EU Commission Bratislava workshop on water and agriculture: <https://circabc.europa.eu/w/browse/37872168-8d23-4cdd-977a-f3277f4d7bc0>

WFD “basic” & “supplementary” measures

Basic (Art 11.3, Annex VI part A)

- Point & diffuse source legislation implementation
- Possible additional measures on point/ diffuse sources
- Priority Substance controls
- Drinking water source protection
- Abstraction/ recharge controls
- Groundwater protection
- Etc...

Supplementary (Art 11.4, Annex VI part B)

- Legislative instruments
- Administrative instruments
- Economic or fiscal instruments
- Negotiated environmental agreements
- Codes of good practice
- Adapted agricultural production (e.g. low water use)
- Water efficiency and re-use measures
- Educational projects
- Etc...